

# Máquina de videomedición instantánea Part-Quickie

## Features At A Glance

- Point
- Line
- Angle
- Distance
- Radius/Diameter
- P.C.D
- Blobs
- 2D Profiles
- Area, Perimeter
- Form Tolerances
- Orientation Tolerances
- Trend Analysis
- Position Tolerances
- Deviation Analysis
- Customized Report

## Generation

- Construction

## Capabilities

- Auto Part Alignment
- Width



Modelos disponibles				
Model	Measuring range (LxW) mm	Cam res	Accuracy	Rep
SVI-PQ-16	16x13	5Mp	3µm	2µm
SVI-PQ-24	23x20			
SVI-PQ-36	34x29			
SVI-PQ-48	46x38			
SVI-PQ-64	61x51	12Mp	5µm	3µm
SVI-PQ-80	80x60			
SVI-PQ-96	96x72			
SVI-PQ-120	120x90		10µm	5µm
SVI-PQ-144	144x110			

NOTA: las imágenes y características pueden cambiar sin previo aviso.

**Cualquier duda o aclaración favor de llamarnos, estamos para SERVIRLE**

México: [-52] 55-5300-4517, 55-53004271, 55-5312-2536  
 Querétaro: [-52] 442-340-0250, 442-340-0251, 442-193-5678  
 Puebla: [-52] 222-219-9999, 222-418-1443, 222-228-1633



## MEASURING -SOFTWARE

"THE CONCEPTUAL MODEL OF SOFTWARE ORGANIZES THE WORK FLOW AT EVERY STAGE OF MEASUREMENT PROCESS -MEASURING-RECORDING ANALYZING -REPORTING AND COMMUNICATING THE DIMENSIONAL DATA."

### Software Desktop



Comprehensive Software Desktop with all the measuring functions just a click away. Simultaneously with the measurement you will have the result display of the measurement in front of you on the software desktop.

### Auto Alingment



The location and the orientation of the path are automatically adjusted. There is no need of manual alignment or preparation of any jig or fixture to start the measurement.

### Tolerance types

Supports more than 10 types of tolerance settings with display in color coded pass and fail output. If there's a part or feature that doesn't measure up, you will know it immediately. All out of tolerance features displayed in red.

#### LOCATION

- Bidirectional
- True position
- Concentricity

#### SIZE

- Length
- Radius
- Angle
- Width
- Diameter

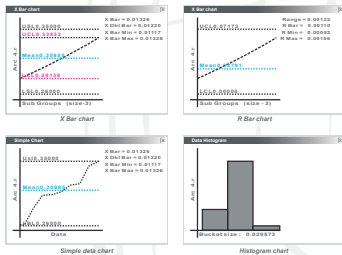
#### FORM

- Straightness
- Roundness

#### ORIENTATION

- Parallelism
- Perpendicularity

### Integrated SPC



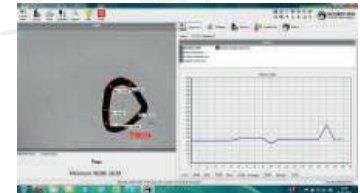
Inbuilt Trend Monitoring and Statistical Evaluation of any measured quantity is a prominent feature of the software.

### Report generation



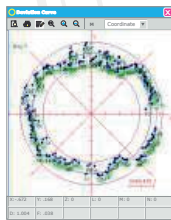
Fully customizable report format with color coded Pass /Fail. Confirm to your ISO specifications and send data directly to an ASCII, Excel or any SPC program.

### Easy to do Programming



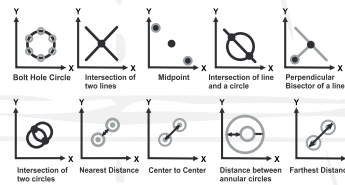
The software provides the flexibility to make new programs for new parts which are not part of standard software menu. The new software can be easily linked to the data management module for generating reports according to the any latest standard.

### Deviation analysis



An advance feature to analyze each of the 1000 points on the sample helps in understanding the variation in detail.

### Construction Capabilities



Construction of mid-lines, bolt hole circle, mid-points, intersection of two lines etc. All 2D construction are possible in this software

### Sub-Pixel Image Processing



image processing to detect the edges is at Sub-Pixel Level down to 1/10th-1/100th which in proves the overall accuracy of the system.

**Cualquier duda o aclaración favor de llamarnos, estamos para SERVIRLE**

México: [-52] 55-5300-4517, 55-53004271, 55-5312-2536  
 Querétaro: [-52] 442-340-0250, 442-340-0251, 442-193-5678  
 Puebla: [-52] 222-219-9999, 222-418-1443, 222-228-1633



## Technical Specifications

Model	SVI-PQ-36	SVI-PQ-64	SVI-PQ-Z40
Field of View	Fixed:36x27 mm	Fixed:64x48 mm	Variable from 40x30 mm to 4x3 mm
Accuracy	± 5µm	± 5µm	± 3µm
Repeatability	± 3µm	± 3µm	± 2µm
Illumination-Surface	LED	LED	LED
Illumination-Countour	Green LED	Green LED	Green LED
Z-axis Movement	30 mm	30 mm	30 mm
Power Supply	110/220V @ 50Hz ± 5%		
Max. Component Weight	3 Kg (Vertical Model) or 7 Kg(Horizontal Model)		
Machine Weight	25 Kg		
Interface	USB/Ethernet		
Optional Hardware	Laptop with Win7/8 Operating System		
Camera	5MP SONY Industrial Camera		
Base Platform & Column	Metal		
Setup	Horizontal/ Vertical		
Quick Manual Measurement	Optional		
Auto Alignment	360° Compensation		
Max. Measurement Points	10,000		

## Accessories



**Center Holding Device**



**V. Block**



**Vertical Holding Device**

3

**Cualquier duda o aclaración favor de llamarnos, estamos para SERVIRLE**

México: [-52] 55-5300-4517, 55-53004271, 55-5312-2536  
 Querétaro: [-52] 442-340-0250, 442-340-0251, 442-193-5678  
 Puebla: [-52] 222-219-9999, 222-418-1443, 222-228-1633