

# Digital Impact testing machine JBW-500B

## Introduction:

JBW-B series PC controlled semi-automatic impact tester is mainly used to determine the anti-impact capability of ferrous metal materials with high toughness, especially for steel and iron and their alloy, under dynamic load. This series tester is operated semi-automatically, the pendulum of the machine can be raised or released automatically. Be applicable for continuing testing in different kinds of laboratories and other metallurgy industrial manufactories. It is designed and developed according to standard of ISO148, ASTM E23.



- \*Pendulum rising, impact, free releasing etc. action can be controlled easily by PC mouse simple click, as well as the remote control box;
- \*MSafety pin guaranties the impact action, standard protection shell to avoid any accident.
- \*Pendulum will automatically rising and ready for next impact action after specimen breakout.
- \*With two pendulums (big and small), PC software to display the energy loss, impact tenacity, rising angle, test average value etc. test data and result, also the curve display available; with calculation and report printing function. The dial scale can show test results too

## Specifications:

Impact energy	250J/500J
Impact velocity	5.4m/s
Rising angle	150°
Specimen supporting seat span	40mm
Radius of supporting seat edge	R1.0~1.5mm
Radius of striker blade	R2.0~2.5mm
Distance from pendulum shaft center to impact center	750mm
Standard specimen dimensions	10×10×55mm
Power	380v, 50HZ, 3 phase/220v, 60HZ, 3 phase
Impact blade two face included angle	30°
Loadframe dimensions	2124×600×1340mm
Weight	750Kg
Impact blade thickness	16mm
Angle accuracy	±0.1°

LAS IMAGENES PUEDEN VARIAR DEL ORIGINAL; INFORMACIÓN SUJETA A CAMBIO SIN PREVIO AVISO

**Cualquier duda o aclaración favor de llamarnos, estamos para SERVIRLE**

México: [-52] 55-5300-4517, 55-53004271, 55-5312-2536  
 Querétaro: [-52] 442-340-0250, 442-340-0251, 442-193-5678  
 Puebla: [-52] 222-219-9999, 222-887-0114, 222-228-1633

## Standard Accessories:

Load frame	1 set
500J pendulum	1 pc
250J pendulum	1 pc
Motor (on the loadframe)	1 set
Rising pendulum driving device (on the loadframe)	1 set
Automatic hitch pendulum device (on the loadframe)	1 set
Safety pin (on the loadframe)	1 set
Supporting seat adjusting device	1 pc
Specimen center device	1 pc
Photoelectric sensor	1 set
Computer	1 set
Pinter	1 set
Software	1 set
Safety cover	1 set
Device to dismantle pendulum	1 set
Packing list	1 pc
Software Operation manual (English Language)	
Operation manual (English Language)	1 pc



Specimen centering device



Device to dismantle pendulum



Manual control box



Supporting seat span adjusting device



Terra anchor bolts and cushion irons

LAS IMAGENES PUEDEN VARIAR DEL ORIGINAL; INFORMACIÓN SUJETA A CAMBIO SIN PREVIO AVISO

**Cualquier duda o aclaración favor de llamarnos, estamos para SERVIRLE**

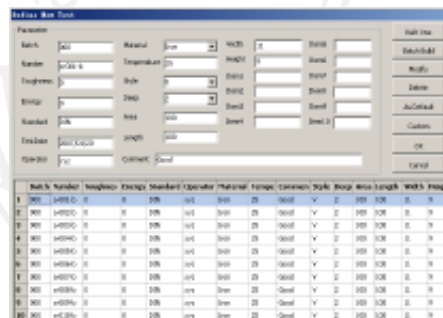
México: [-52] 55-5300-4517, 55-53004271, 55-5312-2536  
 Querétaro: [-52] 442-340-0250, 442-340-0251, 442-193-5678  
 Puebla: [-52] 222-219-9999, 222-887-0114, 222-228-1633

## Software:

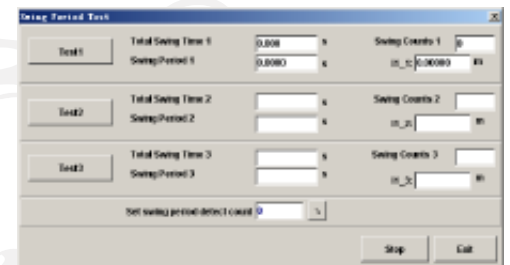
- 1, Windows version XP,Vista,7, screen display, operation with Mouse & Keyboard;
- 2, Test result can export to MS Word, (2007, 2010), does not support MS Office Home Edition;
- 3, The software support two or more pendulums in a model, set the accurate Local Acceleration due to gravity, fall angle, pendulum length,pendulum mass or weight,to obtain a more accurate test performance;
- 4, Support Min,Max,Mean,Standard Deviation for batch test;
- 5, High precision swing period auto-detection;
- 6, High precision energy loss auto-detection,auto-compensation;



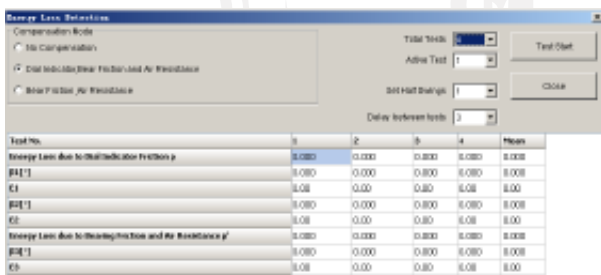
Main interface



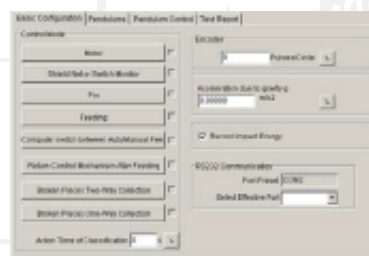
Specimen Information Create



Swing Period Detect



Energy Loss detection



System parameter



Language selection

LAS IMAGENES PUEDEN VARIAR DEL ORIGINAL; INFORMACIÓN SUJETA A CAMBIO SIN PREVIO AVISO

**Cualquier duda o aclaración favor de llamarnos, estamos para SERVIRLE**

México: [-52] 55-5300-4517, 55-53004271, 55-5312-2536  
 Querétaro: [-52] 442-340-0250, 442-340-0251, 442-193-5678  
 Puebla: [-52] 222-219-9999, 222-887-0114, 222-228-1633